

# 3300

## Steam Conditioning Valve



Effective. Efficient

**Size:** 1" (DN 25) to 16" (DN 400)

**Pressure Rating:**

1" to 8" - 150# to 2500#

10" to 12" - 150# to 1500#

16" upto 600#

**Leakage Class:** Class IV & V

**Certifications:** IBR, PED/CE



### Applications:

- Downstream Oil and Gas
- General Industry
- Midstream Oil and Gas
- Power Generation
- Processing
- Renewables

High-Performance SCV

Flexible Actuation Options

3100 Series Control Valve

Combined Control & Desuperheating

Precise Steam Pressure Control

3200 Series Desuperheater

Multiple Trim Combinations

Efficient Temperature Control

High Turndown Ratio



Scan me for more information  
(or)  
Visit us in: [www.circorindia.com](http://www.circorindia.com)

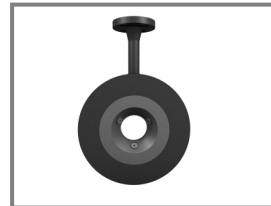
## 3300 Model Specifications

<b>Body Type</b>	Globe
<b>Valve Size</b>	1" (DN 25) to 16" (DN 400)
<b>ANSI Class</b>	1" to 8" – 150# to 2500# 10" to 12" – 150# to 1500# 16" upto 600#
<b>End Connections</b>	SWE, BWE, RF, RTJ
<b>Plug Type</b>	Contour Plug (UB), Drilled Cone Plug (UB/PiB), Standard Plug (PiB/PB)
<b>Cage Type</b>	Standard Ported Cage, LoNoise I & II, Zick Twist <sup>1</sup>
<b>Flow Characteristics</b>	Linear, Equal Percentage, Modified
<b>Packing Type</b>	Single/Double PTFE, Single/Double Graphite, Low Emission PTFE/Graphite
<b>Nozzle Types</b>	Venturi, Fixed Nozzle, Probe/Wall Mounted SL Nozzle, IC DSH with DC/ZT/MZ trims <sup>1</sup> , SA Nozzle
<b>Body Material</b>	A216 Gr WCC, A352 Gr LCC, A217 Gr WC6, A217 Gr WC9, A351 Gr CF8M
<b>Leakage Class</b>	Class IV and Class V
<b>Actuation</b>	Pneumatic, Electric, Electro-Hydraulic, Hydraulic
<b>Certifications/ Compliance</b>	IBR, PED/CE

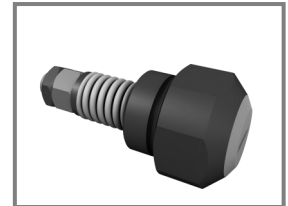
RF – Raised Face Flange; RTJ – Ring Type Joint; SWE – Socket Weld End; BWE – Butt Weld  
UB – Unbalanced; PiB – Pilot Balanced; PB – Plug Balanced

1 – Customized Trim Options

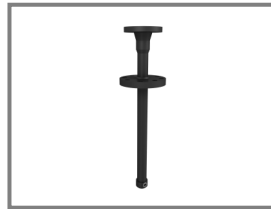
### Nozzle Types



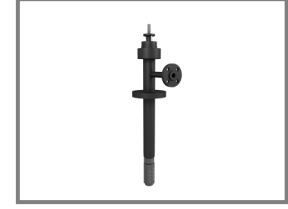
Venturi Nozzle



SL Nozzle



Fixed Nozzle



IC Desuperheater

### Trim Options



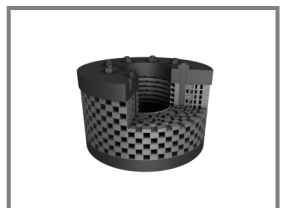
Contour Plug



Drilled Cone

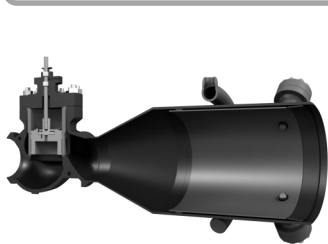


LoNoise

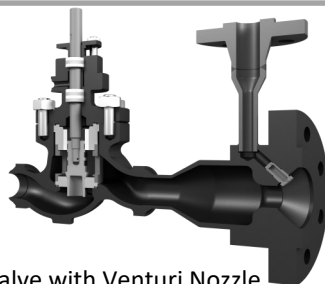


Zick Twist

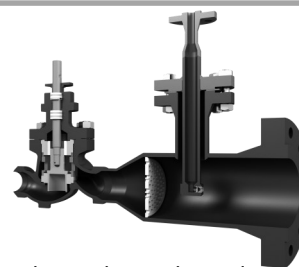
### Types of Models



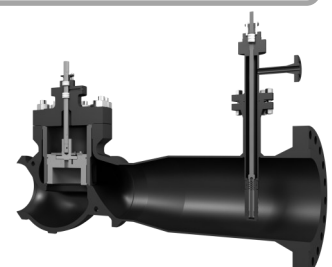
Valve with SL Nozzle



Valve with Venturi Nozzle



Valve with Fixed Nozzle



Valve with IC DSH

### CIRCOR Flow Technologies India Pvt. Ltd.

SF No. 337/2, No.15 Naranapuram Village,  
Thennampalayam to Annur Road,  
Ponnandampalayam, Coimbatore 641659  
Tamil Nadu, India.

Phone: +91 (0) 421 2321600

Email: sales.valvesindia@circor.com

[circorindia.com](http://circorindia.com)



ALLWEILER® | IMO® | IMO AB® | HOUTTUIN™ | TUSHACO® | WARREN® | ZENITH® | RTK® | SCHROEDAHL® | HALE HAMILTON®

CIRCOR, ALLWEILER, IMO, TUSHACO, WARREN, IMO AB, HALE HAMILTON, RTK and SCHROEDAHL are registered trademarks and HOUTTUIN is a trademark of CIRCOR International or its subsidiaries in the U.S. and/or other countries, ©2025, CIRCOR International. All rights reserved.