

3500

Skid Solutions | Dump Tube



Size: 1" and above

Pressure Rating: 150# to 2500#

Certifications: IBR



Industries:

- Downstream Oil and Gas
- General Industry
- Midstream Oil and Gas
- Power Generation
- Processing
- Renewables
- Upstream Oil and Gas

Custom skid solution

Power plant compatible

Built-to-order system

Auxiliary system ready

Paper & pulp proven

Steam engineering excellence

Process industry fit

Rugged engineered design

High reliability assured



Scan me for more information
(or)
Visit us in: www.circorindia.com

Pressure Reducing Station | 3510

Includes a pressure control loop with 3100/3400 pressure reducing valve, isolation valve, PT, and PID controller. The valve automatically modulates based on downstream steam demand.

Desuperheating Station | 3520

Uses 3200 desuperheater with a temperature control loop including 3100 spray water control valve and field instruments for accurate desuperheating. The skid includes bypass, isolation valve, dual Y-strainers, and non-return valve. Ensures stable outlet steam temperature under varying load conditions.

Pressure Reducing Desuperheating Station | 3530

Conditions boiler steam to required pressure and temperature via integrated control loops.

Pressure loop: 3100 / 3300 / 3400 valve, bypass line, PT, and gauges.

Temperature loop: 3200, 3100, bypass line, TT, and TG.

Includes safety valves and steam traps to avoid overpressure and condensate.

Dump Tube | 3540

The dump tube directs steam into the condenser at low/sub-atmospheric pressures, reducing outlet size and noise. Mounted at the condenser inlet, it allows final pressure drop, steam expansion, and cooling.

Correct sizing and shape are crucial to avoid affecting turbine exhaust flow.

Technical Specifications

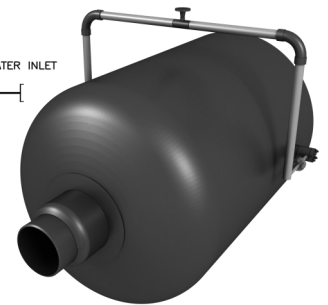
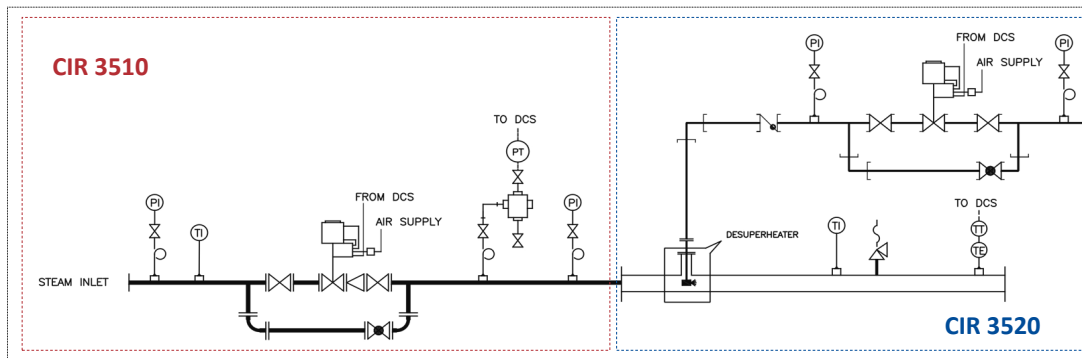
Type	Skid with complete piping as per ANSI B31.1 Power Piping
Size	1" and above
ANSI Class	150# to 2500#
End Connections	SWE, BWE, RF, RTJ
Skid Material	A106 Gr B, A335 Gr P11, A335 Gr P22, A335 Gr P91
Control Valve	3100 / 3300 / 3400
Desuperheater	3200

Air-cooled condensers:

The dump tube is fixed to the turbine exhaust with holes around the full 360° circumference.

Water-cooled condensers:

The tube is mounted on the condenser with holes in two 90° sectors to prevent steam from flowing upward into the turbine or directly down onto condenser tubes.



CIR 3530 Pressure Reducing Desuperheating Station

CIR 3540 Dump Tube

CIRCOR Flow Technologies India Pvt. Ltd.

SF No. 337/2, No.15 Naranapuram Village,
Thennampalayam to Annur Road,
Ponnandampalayam, Coimbatore 641659
Tamil Nadu, India.

Phone: +91 (0) 421 2321600
Email: sales.valvesindia@circor.com

circorindia.com



ALLWEILER® | IMO® | IMO AB® | HOUTTUIN™ | TUSHACO® | WARREN® | ZENITH® | RTK® | SCHROEDAHL® | HALE HAMILTON®
CIRCOR, ALLWEILER, IMO, TUSHACO, WARREN, IMO AB, HALE HAMILTON, RTK and SCHROEDAHL are registered trademarks and HOUTTUIN is a trademark of CIRCOR International or its subsidiaries in the U.S. and/or other countries, ©2025, CIRCOR International. All rights reserved.